

## SPONSOR RELEASE

# ISQ™ 7610 Single Quadrupole GC-MS

Produce results more rapidly and experience unstoppable efficiency in your analysis with the Thermo Scientific™ ISQ™ 7610 Single Quadrupole GC-MS system



To stay ahead, analytical testing laboratories need the ultimate confidence of a GC-MS system that easily and reliably produces trusted results, day after day. For this, you can count on the Thermo Scientific™ ISQ™ 7610 Single Quadrupole GC-MS System. Simplified operation, automated workflows, and extended dynamic range deliver consistent results from system to system in every laboratory. Thermo Scientific™ NeverVent™ technology, extended-life detector, and intelligent software eliminate unnecessary downtime to maximize sample throughput. To ensure you are ready for any analytical challenge, the system is upgradeable from entry-level to advanced configurations. Now you can take the lead with rapid return on investment (ROI) for your regulated GC-MS analyses

### **Increase instrument uptime**

Eliminate unnecessary, unplanned instrument downtime and maximize productivity to achieve unprecedented efficiency, day after day. The ISQ 7610 Single Quadrupole GC-MS System combines robustness with the ability to change the GC column and clean the ion source without interrupting your analytical workflows.

### **Monitor key aspects of your GC-MS system**

With Thermo Scientific™ SmartStatus™ instrument tracking within Chromeleon CDS, quickly see whether instruments are ready to run samples, if maintenance is required or if consumables should be replaced. The fully customizable software enables you to make data-driven decisions on when to perform maintenance and avoid unnecessary downtime.

### **Maximize sample throughput**

When high sample throughput is essential, the system delivers results on time and with ease. Automated workflows and simplified instrument operation ensure every user produces consistent results, sample after sample. Extended linear range enables method consolidation so you can analyze more compounds at varying concentrations in a single run.

### **Realize rapid return on investment**

Ensuring your system delivers results as soon as it's installed is necessary to achieve rapid ROI. With built-in intelligence that simplifies instrument setup, analytical methods, and everyday operation, the ISQ 7610 Single Quadrupole GC-MS System is designed for accelerated deployment. Reduced needs for operator training and faster time to full productivity together with maximum sample throughput provide fast return on your instrument investment.

Thermo Fisher Scientific is working to provide more information about our products' environmental impact by stepping up to participate in the ACT Label program with selected products.

Find out more at [thermofisher.com/ISQ7610](https://thermofisher.com/ISQ7610)

**ThermoFisher**  
SCIENTIFIC

# ISQ™ 7610 Single Quadrupole GC-MS



Environmental



Food safety



Petrochemical



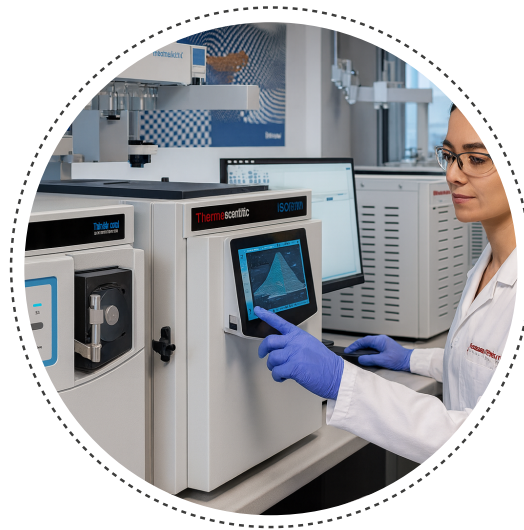
Clinical and  
toxicology



Pharmaceutical



Produce results more rapidly and experience unstoppable efficiency in your analysis with the Thermo Scientific™ ISQ™ 7610 Single Quadrupole GC-MS system.



[VIDEO](#)

[WEBSITE](#)